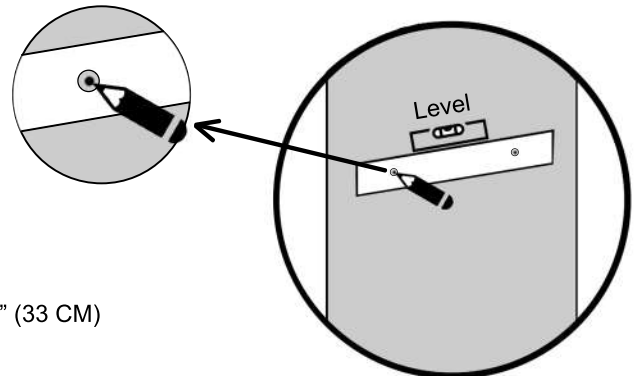
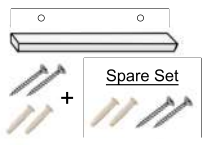


# Magnetic Knife Holder (16") - Mounting Instructions

## Included Parts:

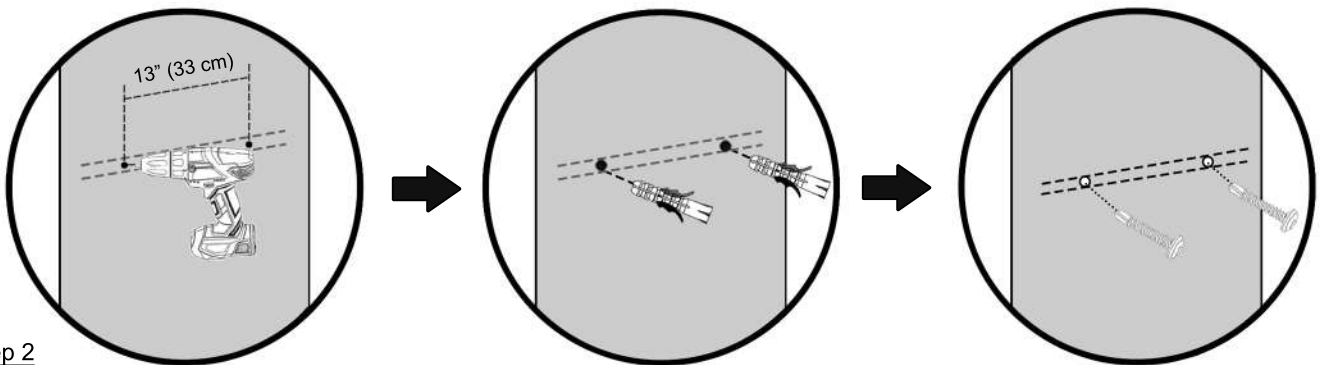
- 1 Magnetic Bar, 1 Stencil
- 2 Screws (4 X 40 mm)
- 2 Screw Anchors (5 X 30 mm)



## Step 1


Use stencil to mark two small dots for intended placement

- The distance between the center of the two dots should be 13" (33 CM)
- Install the bar horizontally, use of a level is recommended

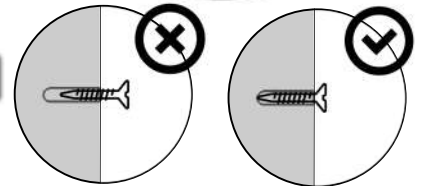


## Step 2

- Drill two holes on the marked dots the same size as the anchors

 Drill only one hole first. Then, using the stencil, check that the second hole is where it should be

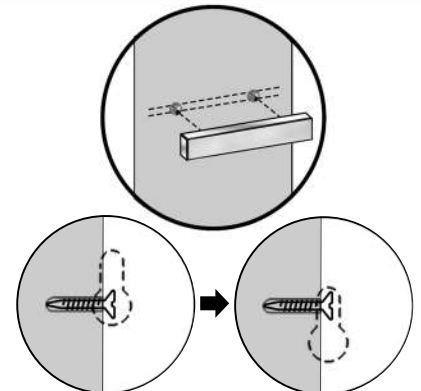
- Install the screw anchors into the holes. Make sure they are flush with the wall
- Install the screws into the anchors, leaving only the head exposed



## Step 3

- Place the magnetic strip over the screws
- Place the wider part of the holes on the screw heads first
- Once on, slowly and carefully, press the magnetic bar down so the screw heads lock into the narrow part of the holes

After you finished, if the magnetic bar is loose, make sure the screw anchors are all the way in and that the screw heads are the only parts visible.



## Proper Use & Warnings

- The bar should be installed horizontally
- Recommended placement - above a hard surface (i.e. kitchen counter)
- Knife blades should point up
- Keep away from children
- Pacemakers may be affected. Keep a distance of at least 6 inches from the magnet bar

